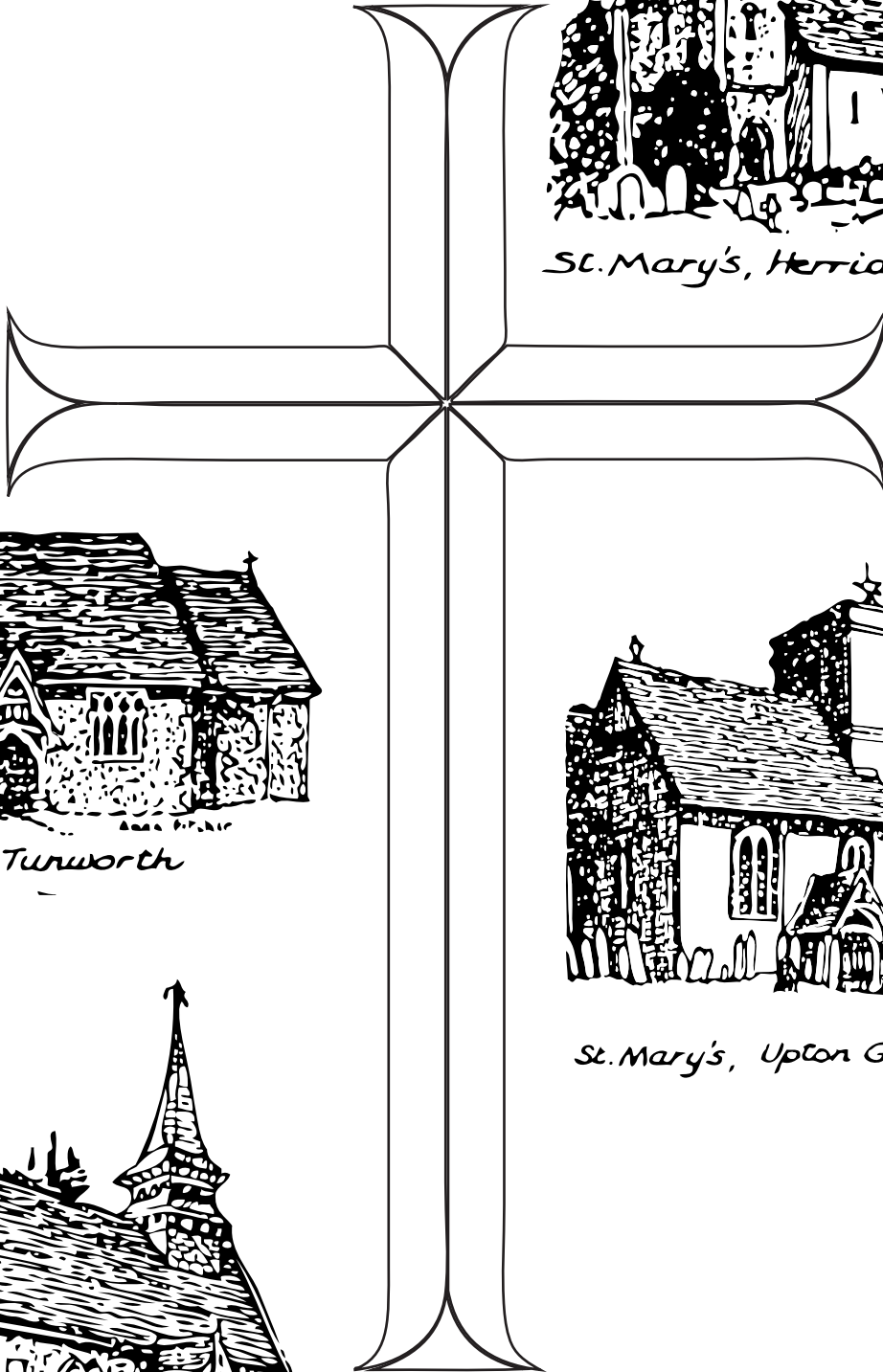


# PARISH MAGAZINE



*St. Mary's, Herriard*



*All Saints', Turworth*



*St. Mary's, Upton Grey*



*St. Lawrence, Weston Patrick*

September  
2020

## USEFUL CONTACT DETAILS

|                         |                |   |
|-------------------------|----------------|---|
| Benefice Rector         | Simon Butler   | 01256 861706<br>simon@moretolife.church |
| Parishes' email address |                | admin@moretolife.church                 |
| Licensed Lay Ministers  | Jill Lestrille | 01256 862131                            |
|                         | Alan Hoar      | 01256 395077                            |

### **Church Wardens**

|                   |                  |              |
|-------------------|------------------|--------------|
| Herriard/Winslade | John Jervoise    | 01256 381723 |
|                   | Fiona Ives       | 07867 973266 |
| Tunworth          | Mark Ruffell     | 01256 346148 |
|                   | Edwina Spicer    | 01256 471271 |
| Upton Grey        | Sarah Barnes     | 01256 861164 |
|                   | Geoffrey Yeowart | 01256 861218 |
| Weston Patrick    | Clare Davies     | 01256 862762 |

### **Elected Representatives**

|  |                   |   |
|--|-------------------|---|
| Borough Councillor   | Mark Ruffell      | 01256 346148<br>cldr.m.ruffell@basingstoke.gov.uk   |
| County Councillor  | Anna McNair Scott | 01256 476422  |
| Member of Parliament<br>(Phone for your MP Surgery Appointments) | Ranil Jayawardena | 0207 219 3000<br>ranil.jayawardena.mp@parliament.uk |

### ***Parish Chairmen***

|                                 |                        |                          |
|---------------------------------|------------------------|--------------------------|
| Herriard                        | Gareth Davies          | Chair@herriard-pc.gov.uk |
| Tunworth                        | David O'Donnell        | 07831 631455             |
| Upton Grey                      | Charles Holroyd        | 01256 862127             |
| Weston Patrick/Corbett (Acting) | Sheila Stranks (Clerk) | 07775 423730             |
| Winslade                        | John Raymond           | 01256 381203             |

### **PC Andy Reid**

|            |              |
|------------|--------------|
| Main local | 01256 389050 |
| Mobile     | 07768 776844 |

### **Neighbourhood Watch**

|                        |                 |                            |
|------------------------|-----------------|----------------------------|
| Herriard               | Rebecca Wills   | herriardnhw@btinternet.com |
| Upton Grey             | George Hillier  | georgeandray@uptongrey.uk  |
| Powntley Copse         | Jill Burry      | jill.burry@btinternet.com  |
| Tunworth               | Sarah Whitcombe | swhitcombe@hotmail.co.uk   |
| Weston Patrick/Corbett | David Don       | davidtwdon@gmail.com       |

### ***Parish Magazine***

|                          |                   |                             |
|--------------------------|-------------------|-----------------------------|
| Editors                  | Tess Chevallier   | 01256 862636                |
|                          | David Shearer     | 01256 320538                |
|                          | Sheila Stranks    | 01256 862465                |
|                          | Ian Lansley-Neale | 01256 381380                |
| All editors' email:      |                   | uptongreymagazine@gmail.com |
| KidsZone                 | Helen Chatfield   | 07540 140228                |
| Treasurer                | William Maughan   | 01256 861371                |
| Advertising & Production | Susie Vereker     | 01256 862365                |
|                          |                   | uptongreymagazine@gmail.com |
| Distribution             | Jane Hanbury      | 01256 862681                |

**BENEFICE MAGAZINE – September 2020**  
**Edition for the Parishes of Herriard with Winslade, Tunworth,**  
**Upton Grey and Weston Patrick**

**Letter from the Ministry Team**

I was mowing my lawn this morning, a task which I have to admit is not one of my favourite things to do, and as I was walking up and down the length of my lawn my eyes were caught by the sight of a fresh green acorn fallen from one of the large oak trees which border my garden. It is a vibrant green, still safely ensconced in its textured cup and it reminded me of



the words of the well known twelfth century anchoress Julian of Norwich. In one of her famous visions Julian reflected on a hazelnut in the palm of her hand, so small, so insignificant, much like the acorn I found this morning. She marvelled how anything so little could last or have value, but God answered her questions by saying ‘It lasts and ever shall, for God loves it. And so have all things their beginning by the love of God.’ The smallest of things can be reminders of God’s love, and from the smallest hazelnuts and acorns great trees can grow which will outlast all that plant them.

As we have joyfully restarted our in-person worship in some of our churches we always make time in our informal services to share things which have encouraged us or for which we are grateful. I have been struck over the last couple of weeks how the things we are sharing now are the things which we most likely took for granted six months ago. Suddenly it is the small details of our lives which bring us the most encouragement and which inspire the most gratitude. We are no longer striving for the big experiences or latest possessions but are recognising the small everyday gifts we are blessed with. For example one person was grateful that, having been shielding for twelve weeks they were finally able to go into a shop, another was encouraged by being able to meet up with a group of friends in person and another that they could finally see their Mum who only lived down the road. For me, as someone who lives on their own, I remember how grateful I felt when I drank the first cup of coffee in twelve weeks that I hadn’t had to make for myself. We are surrounded every day by small gifts which may at first glance

appear insignificant but which on reflection encourage us and bring us hope and joy.

In the gospels Jesus often celebrates the small things in life. He values children, and when the disciples want to send them away because they are distracting and noisy Jesus rebukes his friends and invites the children to gather round because it is in their little lives we can see the kingdom most profoundly. He told stories about God's love using images such as a lost sheep or a lost coin; the small things, that others might consider insignificant, matter to God. And he told his disciples of the power of having a 'little faith': "Truly I tell you, if you have faith like a grain of mustard seed, you can say to this mountain, 'Move from here to there', and it will move."

From small beginnings great things can come and, as we begin to take the first tentative steps in re-opening those aspects of our lives put on hold by lockdown, it is valuable and comforting to remember this. It can sometimes feel overwhelming to try to grapple with the larger picture of what is happening or to make long term decisions and commitments when the next few months feel so uncertain. So my encouragement today is to be like Julian of Norwich. Look out for the small signs of life that are emerging during this time, be encouraged by them and share them with others. I am going to keep my acorn on my desk for the next few weeks as a reminder to value the small, everyday gifts in my life.

Julian of Norwich recognised the beauty of these gifts, and she dedicated her life to writing about the joy, hope and light she found in God's love demonstrated in Jesus Christ. In reflecting on the eternal wonder hidden in the beauty of the gifts all around her Julian wrote her most famous mediation: 'And so our good Lord answered to all the questions and doubts which I could raise, saying most comfortingly: I may make all things well, and I shall make all things well, and I will make all things well; and you will see yourself that every kind of thing will be well.'

Whatever the coming weeks and months hold, may we all find the peace of knowing the joy and assurance of Jesus' love for each of us as we celebrate the beauty of the small gifts in our lives.

**Rev Helen O'Sullivan**

### **FROM THE REGISTERS**

**Funeral** Helen Duke at Upton Grey on July 29th

**Funeral** Tony Falconer at Basingstoke Crematorium on August 12th

## CHURCH NEWS

### Public worship restarting

In September all four of our local churches, and nearly all of the twelve churches in the benefice, will be able to hold public worship. The services are a mixture of contemporary and traditional, formal and less formal, communion and non-communion. Congregational singing is not yet permitted, but most of the services will contain music - including live organ music or recorded music before and after the service.

Generally the Holy Communion services are the standard Common Worship - in modern language - but there will be the following Book of Common Prayer communion services (in traditional language): in All Saints Odiham on September 6th at 9.00am (said) and September 20th at 9.00am (with music), and in St Nicholas Newnham on September 27th at 9.00am (with music). The non-communion services are generally more informal, and include a mixture of recorded modern songs and traditional hymns. In this group of four churches the services in September will be:

### September 6th

9.00am **Upton Grey** – Holy Communion

11.00am **Herriard** – informal service

6.00pm **Tunworth** – Evensong

(Please note: although traditionally Tunworth has held Evensong on the second Sunday of the month, in September this is not practical. It is planned to return to the second Sunday of the month in October.)

### September 13th

9.00am **Weston Patrick** – Holy Communion

11.00am **Upton Grey** – informal Holy Communion

(this is an informal service which includes an Act of Communion)

### September 20th

9.00am **Upton Grey** – Holy Communion

11.00am **Herriard** – informal service

### September 27th

9.00am **Herriard** – Holy Communion

11.00am **Upton Grey** – informal service

6.00pm **Weston Patrick** – Evensong

Please see the website [www.moretolife.church](http://www.moretolife.church) for details of services in other churches.

## **Requirements to keep everyone safe during public worship**

In order to comply with physical distancing guidelines, seating capacity in all churches is much reduced. Spacing in this group of historic churches is as close to 2 metres as is reasonably practical, but as a result of space constraints it may at times be closer to 1 metre. Mitigations being taken include face coverings, hand sanitising on entering and leaving the building, the congregation mainly facing in the same direction during the service, and optimum ventilation.

**Face coverings** are now mandatory in places of worship. The standard limited exemptions apply, as is the case in shops and public transport etc. Plus, in churches, those who are leading services or assisting (for example by reading, preaching, or leading prayer) do not always need to wear a face covering. It should be noted that face coverings are intended mainly to protect others, not the wearer, and they are not a replacement for physical distancing and regular hand washing.

At Holy Communion services, only bread is being distributed (the logistics for receiving communion are clearly explained at each service).

For the time being it is not possible to offer separate children's groups at services, but families are invited to feel free to bring books, toys, games etc, and the clergy will of course be endeavouring to engage children directly as much as they can.

## **Registration**

In order not to have to turn anyone away while there is significantly reduced seating capacity, everyone wishing to attend a service is asked please to **pre-register** (no later than the day before the service) **by sending an email to [nhdbchurchservices@gmail.com](mailto:nhdbchurchservices@gmail.com)** to say:

- Name, address, and telephone number.
- Which service you would like to attend (e.g. September 6th 9.00am Upton Grey).
- How many adults and children will be attending from your household.

It is hoped that everyone wishing to attend each service can be accommodated, but if capacity has already been reached when your email is received you will be informed and will be offered 'first priority' at the following week's service.

## Services online

Recognising that some parishioners are not in a position to attend services in church, online streamed services are continuing.

The traditional Sunday streamed service is now available from 9.00am - please see the links on the News page of [moretolife.church](http://moretolife.church) or search YouTube for 'North Hampshire Downs Churches'.

The weekday morning streamed services of 'Morning Prayer' or 'Thought for the Day', and the previous 11.15am streamed informal Sunday service, have been discontinued for the time being.

In addition to streamed services, the Church of England has established 'Daily Hope', a telephone line offering music, prayers and reflections as well as full worship services from the Church of England. The line, which is available 24 hours a day on 0800 804 8044, has been set up particularly with those unable to join online church services in mind.

## Churches open for private prayer

Most of the twelve North Hampshire Downs churches are available for private prayer and quiet reflection at some point during the week (St Andrew's South Warnborough has had to undergo a long period of building works, but is hoping to reopen for private prayer in October).

- **St Mary's Upton Grey** is open for private prayer from 10.00 to 5.00 on Wednesdays and Sundays (though noting that there are public services on September 13th and 27th at 11.00). On most Wednesdays the Revd Simon Butler is in church between 4.00 and 5.00 to pray with, and for, anyone who would like to.
- **St Lawrence Weston Patrick** is open for private prayer on Thursdays from 3.00 to 4.00pm.
- **St Mary's Herriard** and **All Saints Tunworth** are traditionally kept locked, but access for private prayer is now possible again in the same ways as before lockdown.

Please see [www.moretolife.church](http://www.moretolife.church) for the opening times of other churches.

If you would like to pray with someone, or ask the clergy team to pray for someone, please email: [prayer-requests@moretolife.church](mailto:prayer-requests@moretolife.church).

## Local Village Help and Support Contacts

Most of you are familiar with the support systems in the villages initiated at the beginning of lockdown. If not, please check with the Church Wardens or Parish Council (numbers on the inside front cover).

## **Odiham Foodbank**

Churches which pre-lockdown received donations of food to send to Foodbanks are not finding it easy to resume that service post-lockdown. But the new Foodbank based at the Church Offices in Odiham is open Mondays and Thursdays 1.30-3.00pm (Ostlers Place, Deer Park View, Odiham RG29 1JY). Donations are welcome at those times, or at the Coop in Odiham High Street at any time. If you could do with help, or if you can support us by donating food, please contact us: [odihamfoodbank@gmail.com](mailto:odihamfoodbank@gmail.com), 07387 116947.

## **NEWS FROM THE VILLAGES**

### **Police Report from PC Andy Reid**

Dear Residents,

I am pleased to report a relative lack of crime across the area of this magazine which is always good news. However, between 9pm on Sunday August 16th 2020 and 7am on Monday August 17th 2020 a large amount of garden paving was stolen from a house in Church Street, Upton Grey. I am aware that the thieves have been in Church Street. I have also been told that at about 3am on Monday morning a large diesel engine vehicle was heard in Weston Close, Upton Grey, this is possibly the thieves as they may well have believed they could get into a paddock from the Close. I ask if anyone has CCTV can you please check it from ideally between 9pm and 7am on these dates or more especially between 1:30am and 5am on Monday. If anyone can help please give me a call direct, as always all calls treated in strictest confidence.

In nearby Lasham, a sheep was killed in a field by dogs, and several others injured to the extent that at least a further four have had to be put down due to the severity of their wounds; others may well not recover from their wounds or the stress caused. I cannot reiterate enough that any dog, and it can be any dog no matter how often people feel their dog would not chase sheep, **MUST** be kept on leads or under proper control when near livestock. Please be aware if seen in the act of worrying livestock on agricultural land the dog can be shot, it really is that serious.

We have also had cold callers in our area again with a man from Gloucestershire offering topiary for sale from his van a white Peugeot BH19SG in Weston Road, Upton Grey. In nearby Newnham we have also had a company called Oakwood Cleaning Company cold calling offering to clean driveways, roofs etc. starting to clean the drive when it was not required by the home owner. We have also had another cold caller offering to cut down trees etc. I ask if you have any cold caller offering to do this



type of work please be careful who you employ, make sure you know your rights, ideally check Hampshire Trading Standards website for 'Buy with Confidence' they offer various trades and ALL the companies and their staff have been vetted so you know you won't be ripped off or conned.

Many thanks as always for your continued support

**Andrew REID**, Local Constable, PC 3746, Tel: 01256 389050, Mob: 07768:776844, [andrew.reid@hampshire.pnn.police](mailto:andrew.reid@hampshire.pnn.police)

### **Please help children by donating surplus computer equipment**

Covid-19 and its restrictions have only exaggerated disadvantage in educational opportunity. More assignments are completed and submitted remotely, and children without regular access to technology are seriously disadvantaged compared to their peers.

An initiative has been established in North East Hampshire and the Surrey borders, led by six local Lions Clubs (Aldershot, Fleet, Farnham, Farnborough, Hook & Odiham, Yateley, and Basingstoke – through Basingstoke Voluntary Action) to collect, refurbish and donate computers and those expensive peripherals like monitors, webcams, speakers and printers to families whose children do not have access to them.

The initiative has gone from strength to strength, and the total has grown to well over 400 computers since we reported June's total in July. At the beginning of August we had been able to donate more than 200 laptops, 198 desktops, 7 notebook computers and a good number of refurbished printers, speakers, monitors and other peripherals to families to assist children with remote learning. However, there is always a need for more technology. So please check your lofts, sheds garages and other storage areas for the technology that you have replaced but which you've not yet recycled...

All donated kit will be professionally refurbished, confidentially wiped securely of all data, upgraded to a new operating system and then will make a real difference to a child's educational chances.

Every year, millions of still-usable, surplus PCs are sent to landfills or put into storage. Getting the maximum use out of existing computers, through programmes which support donation, refurbishment and redistribution of used PCs, is also an environmentally responsible choice. These refurbished PCs help make technology accessible to people and organizations which cannot afford new computers.

If you would like to donate any old technology to help a child achieve their potential, please email Sarah Williams at [swilliams@bvaction.org.uk](mailto:swilliams@bvaction.org.uk) who will arrange collection. Alternatively, please email [it@fleetlions.org.uk](mailto:it@fleetlions.org.uk) for more information and to donate.

### **Farming This Month**

Harvest is in full swing now at Hyde farm with the lion's share of the harvest being completed with mainly the Spring sown crops left to harvest. The yields have been a good average this year showing that the wet winter did have an effect on the crops, but the quality of the grain has been good with all the Winter and Spring sown wheat making milling quality. A proportion of the straw from our cereal crops are baled and are used for feeding and bedding on the Ives's dairy farm in Herriard. Our Linseed that we grew for the first time this year, that was located along the A339 behind the Fur and Feathers, went surprisingly well with a good average yield and it provides a good seedbed to plant Wheat into this autumn. The straw off of the Linseed was baled up and went over to a couple of local vineyards, one at Itchen Stoke and the other in Preston Candover. They plan to use them in early spring to prevent late frosts on the vines just as the grapes start emerging, the bales will be burnt to raise the temperature around the vines, stopping it from frosting. The break in the weather is bitter sweet with it putting a stop to harvest but it was needed to soften the ground so our cultivators and our drill can get into the ground with ease. Also the rain encourages weed seeds and volunteer grains to grow so we can spray them off to clean the field ready for the next year's crop (harvest 2021). This is the most effective way of preventing weeds from contaminating the crop we are planning to grow. We will starting drilling (planting) around mid September and aim to have all our autumn crops planted by the end of October.

**Will Cheyney**

### **Long Sutton Church of England Primary School Foundation**

The Foundation is a registered UK charity established in 2019 by friends of Long Sutton school. The aim of the Foundation is to advance the education of generations of pupils by raising significant sums to support the School's ambitious plans for the future, which includes facilitating additional teaching resources, developing the outdoor play area, extending the food technology room and many other great investments.

The Foundation gives the wider community the opportunity to play a part in the future of our excellent village primary school by way of one-off or regular donations. The School's community includes you, the Churches and benefice, RAF Odiham, local businesses and residents, school alumni, relatives, linked educational establishments, charitable organisations and many others.

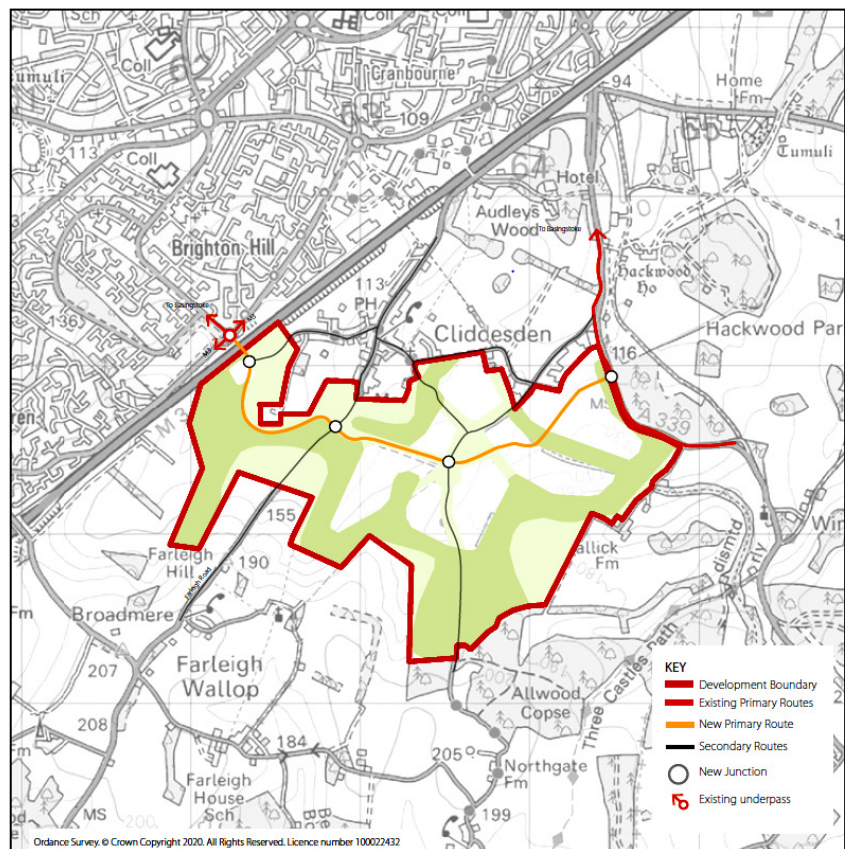
To help make a big difference to a small school, please make a donation today by bank transfer (details below), cheque (to: The Long Sutton C/E Primary School Foundation) or by finding the Foundation on JustGiving.com. For any enquiries please contact Nigel Clark on 07769 330367 or Jo Wright on 07968 395792. Bank - Metro Bank, Sort code 23-05-80, Account No. 38343106.

We thank you in advance for your kind generosity.

### **STaNHd – Stand Up for the North Hampshire Downs**

The Trustees of Portsmouth Estates recently submitted to Basingstoke & Deane Borough Council a speculative concept development proposal for the ‘Upper Swallick Garden Village’. As the map shows, this scheme, which includes the building of at least 2,500 houses, will cover some 730 acres

between Cliddesden, Ellisfield and Winslade. It will devastate an outstandingly beautiful stretch of untouched agricultural land lying either side of the Cliddesden Road leading up Farleigh Hill. The development area surrounding Cliddesden stretches across to border the A339 and Hackwood. This site is within an area known as the North Hampshire Downs. The development would be the size of central Basingstoke.



The rolling hills and views of this countryside are appreciated by many living in Basingstoke and the surrounding area who enjoy walking, running and cycling along the lanes and footpaths that cover this beautiful landscape. Some call it the ‘lungs’ of Basingstoke and the Basingstoke Half Marathon runs through it. This vital outdoor space is important to all living in and around for our mental and physical wellbeing, as many of us discovered during lockdown. It is our hope this area will remain as pristine countryside for enjoyment by future generations.

Bearing in mind pre-Covid traffic queues on the A339 at peak times, this development would make access to Basingstoke impossible at these times. This lack of infrastructure would lead to unacceptable use of the surrounding back roads as rat runs by those wishing to reach the M3 and bypass these queues.

If you would like to help this campaign to PROTECT the North Hampshire Downs landscape please see our website: [www.stanhhd.com](http://www.stanhhd.com) and sign the petition – over 2,000 people signed in the first week and it would be great to reach over 4,000. Please follow/like/share us on Facebook: [www.facebook.com/standupfornorthhampshiredowns](http://www.facebook.com/standupfornorthhampshiredowns).

**Emma Bedford (Secretary STaNHd)**

### **UPTON GREY NEWS**

**[www.uptongreychurch.co.uk](http://www.uptongreychurch.co.uk)**

**[www.uptongreyparishcouncil.co.uk](http://www.uptongreyparishcouncil.co.uk)**

#### **From Caroline James and Brian Thrussell**

**100 Club.** We plan to resume the 100 Club this month. Although the number of participants is lower this year, as we relied on Village Emails and the Parish Magazine instead of door to door collections - not appropriate during lockdown. The good news is that we have a record number of entries, with so many people taking up two or more numbers. The draw will take place during the Parish Council meetings. Second prize will be a whopping £68, the first prize remaining at £100.

**Post Office.** Following the overwhelming result of the village consultation, we have asked Kevin Molloy of Outreach to stop coming to the Shop. The counter structure taken up by the Post Office is being removed and the Shop security boxes rerouted. Suki plans to add vertical produce racks in the space. We recognised that some villagers may have difficulty in accessing cash and other Post Office Services. Please contact Sarah Barnes 861164 who will organise help. Suki will sell stamps and expand on that in the future.

**Shop Use of Hall.** The use of the Hall during the emergency has proved to be widely appreciated. The majority of the regular users have cancelled their bookings this year, thus allowing the Shop's use to continue, as requested by so many villagers.

### **Upton Grey Bridge Club**

There will unfortunately be no Autumn bridge sessions at the Hoddington Arms and I'm afraid this situation is likely to remain. All very annoying as the club has been going for some 15 years and was enjoyed by many. Hopefully the New Year may see a vaccine, but the nature of this terrible virus is I believe like flu where no single vaccine protects us from all strains of Corona Virus.

All disappointing, but anyone suffering from withdrawal symptoms can play on line using 'bridge online' and go to the Solitaire section and play four games. It is quite good and you can click onto any bid and understand the exact meaning of the bid. After four games you will receive a placement. Generally, there are 20 to 30 thousand players at any one time. Oh, and it is absolutely FREE, just like the membership fee for the Upton Grey Bridge Club.

**Peter Haynes**

### **Upton Grey Harvest Supper: Saturday 26th September - Cancellation**

Sadly, we have had to cancel this year's Upton Grey Harvest Supper, hopefully all will be back to normal in 2021.

### **Upton Grey Autumn Festival: Saturday 31st October - Cancellation**

Unfortunately, we have decided to put off the Autumn Festival until next year. Those of you who regularly attend will realise how it would be impossible to impose any type of social distancing at such an event.

Apologies,

**Roger and Fallon**

### **Preserving the Rural Character of Upton Grey**

Most residents will already be aware of the recent huge speculative development proposals for 2,500 new houses just across the A339 between Ellisfield and Cliddesden being announced and presented as a concept to Basingstoke and Deane planners prior to any formal planning application being lodged. Residents are looking at the prospect of radical change in the entire character of a huge swathe of countryside. Basingstoke planners are also being offered a tempting, and almost cost free, contribution to the future house building targets they will be asked to achieve - despite the fact that the proposal drives a coach and horses through the adopted local plan through to 2029.

*The potential for damage to our rural environment is real – and once it is gone it can never be restored.*



That's why the efforts that are being made by a group of Upton Grey residents in the Cemetery Lane Committee to ensure that the rural character of the village is guaranteed for future generations are so important. Church Meadow has been essential to holding so many village, parish and church events for as long as most residents can remember and keeps St Mary's right at the heart of everything. The agricultural land involved is such a crucial part of the visual character of this village, bringing farmland into the heart of Upton Grey: to leave things open to chance and future property markets and planning systems would risk irreparable damage to the small and much-loved rural village. We must wish the Committee all the best in their future discussions to get the best possible outcome for all.

**David Shearer**

### **Upton Grey Playground Equipment**

*Please see the Parish Council's survey re Playground Equipment on page 23.*

## LOCAL DIRECTORY

*(Please take up advertisers' references if necessary.  
We must disclaim responsibility)*

### ACCOUNTS

B20 LIMITED – Chartered Certified Accountants.  
Accounts and Tax Returns preparation and advice.  
Payroll and Book-keeping support for local  
businesses on or off-site  
Call Caroline on 01420 88250 (Alton), mob 07831  
696231 email [caroline.scull@b20ltd.co.uk](mailto:caroline.scull@b20ltd.co.uk)

BLACK & WHITE CHARTERED CERTIFIED  
ACCOUNTANTS A complete accountancy service  
for limited companies, individuals and sole traders.  
Accounts, taxation, self-assessment, book-keeping,  
VAT, management accounts, payroll and CIS.  
2-3 Stable Court, Herriard Park, Herriard, RG25 2PL.  
0800 140 4644. [www.blackandwhiteaccounting.co.uk](http://www.blackandwhiteaccounting.co.uk)  
[info@blackandwhiteaccounting.co.uk](mailto:info@blackandwhiteaccounting.co.uk)

### ART, FRAMING, GIFTS, JEWELLERY WORKSHOP

THE FRAME Odiham. We frame almost anything -  
sports medals & shirts, child's art work, keepsakes,  
certificates, posters, paintings, needlework & textiles.  
We're also a gallery specialising in original pictures  
by local artists, catering for all budgets. *Gifts too.*  
81 High Street, Odiham. 01256 701082  
[theframe@icloud.com](mailto:theframe@icloud.com)  
[www.theframe-gallery.co.uk](http://www.theframe-gallery.co.uk)

### KATHERINE JANE

Gifts for all occasions  
Mon-Sat 9.30 am to 5 pm  
Fountains Mall, High St, Odiham  
01256 703482

### JEWELLERY & SILVERSMITHING WORKSHOP

Bench space for experienced makers, and teaching  
for beginners & intermediates  
Please contact Harriet by text anytime 0780  
1233966 or email [hkw@roundobjects.co.uk](mailto:hkw@roundobjects.co.uk)

### BUILDERS, PLASTERING, DECORATORS, JOINERY, WINDOW/OUTDOOR CLEANING

ANSCOMBE & SONS  
Builders & Contractors, Manor Farm Yard,  
Greywell Road, Upton Grey, RG25 2RQ  
01256 862 995 [anscombebuilders@btconnect.com](mailto:anscombebuilders@btconnect.com)  
[www.anscombeandsons.co.uk](http://www.anscombeandsons.co.uk)

*continued*

### **Builders, decorators, window cleaners, continued**

A CLAY ROOFING offers the following services at  
the highest standard: roof repairs, new roofs, reroof,  
rubber EPDM roofs, lead work, fascias soffits and  
guttering. Please call Adam on 07827011040 for a  
free quote or email [a.clayroofing@gmail.com](mailto:a.clayroofing@gmail.com)  
Facebook <http://www.facebook.com/a.clayroofing>

R J COUTTS - General Builder and Plasterer.  
Call for a free no obligation quote. No job too small!  
Tel: 07786543671  
[rjcoutts@hotmail.co.uk](mailto:rjcoutts@hotmail.co.uk)

### CUBITT BUILDERS

Kolkinon House, Up Nately RG27 9PD  
01256 766939 / 07721 410148  
[hugo@cubitt.biz](mailto:hugo@cubitt.biz) [www.cubittbuilders.com](http://www.cubittbuilders.com)

GOPHEROWEN SERVICES, External property  
maintenance, serving Odiham area for over 10 years.  
We value our reputation for reliability and quality.  
Window and conservatory cleaning. Internal window  
& conservatory cleaning. We also clean gutters and  
fascias, patios and driveways. We repair gutters,  
patios and sheds. Call 01256 704611  
[sales@gopherowen.com](mailto:sales@gopherowen.com) [www.gopherowen.com](http://www.gopherowen.com)

GUTTERSNIPE LTD. Gutter cleaning & repairs.  
Window & conservatory cleaning. We also clean  
soffits & fascias and solar panels. Roof moss  
removal. Beam & vaulted ceiling cleaning.  
Franchise available, call 07816 780749  
01256 830676 / 07816 780749  
[kevin@guttersnipe.uk.com](mailto:kevin@guttersnipe.uk.com)  
[www.guttersnipe.uk.com](http://www.guttersnipe.uk.com)

### HOOK CARPENTRY

Your local carpenter and joiner. Bespoke cabinet  
making for bedrooms & home offices. And much  
more, for your general carpentry requirements.  
Personally designed and handcrafted with over 35 yrs  
experience. Email: [kevin@hookcarpentry.co.uk](mailto:kevin@hookcarpentry.co.uk)  
[www.hookcarpentry.co.uk](http://www.hookcarpentry.co.uk) Tel 07900691605

### PETER LINDGREN

Decorating & General Maintenance  
Mature professional, references available  
Upton Grey 01256 862230  
Mobile 0759 3357 009

*continued*

**Builders, decorators, plasterer continued****MICK TOTT CONSTRUCTION**

Joinery and Building Contractors of Greywell.  
7 Down Farm, Alton Road, Odiham RG29 1QX  
01256 703500 [info@micktottconstruction.co.uk](mailto:info@micktottconstruction.co.uk)  
[www.micktottconstruction.co.uk](http://www.micktottconstruction.co.uk)

**ODIHAM JOINERY**

Specialist bespoke joinery, windows,  
doors, staircases, freestanding furniture  
7 Down Farm Odiham Hook RG29 1QX  
Email [info@odihamjoinery.co.uk](mailto:info@odihamjoinery.co.uk)  
01256 703353 [www.odihamjoinery.co.uk](http://www.odihamjoinery.co.uk)

**OLD & LISTED**

Building renovation, repair and maintenance.  
Tel. 07884168279  
email: [itswellsy@hotmail.com](mailto:itswellsy@hotmail.com)

**ANDY TURNER DECORATORS**

01256 861 881  
email: [andy@decorate.uk.net](mailto:andy@decorate.uk.net)

**PJH PLASTERING**

All aspects of Plastering, 30+ years' experience. Call  
07753588901, [info@pjh-plastering.co.uk](mailto:info@pjh-plastering.co.uk),  
[www.pjh-plastering.co.uk/](http://www.pjh-plastering.co.uk/)

**WESTPORT GREY LTD**

Construction - Management - Development  
Bespoke building projects  
for the discerning client  
Tel: 01256 636 511  
[www.westportgrey.co.uk](http://www.westportgrey.co.uk)

**CONSTRUCTION & GROUNDWORK SERVICES****OWNER-DRIVER DIGGER CONTRACTOR**

Beere and Sons Ltd, 27 Bramblys Close,  
Basingstoke, RG21 8UP  
Email: [nick@beereandsons.com](mailto:nick@beereandsons.com)  
[www.beereandsons.com/digger](http://www.beereandsons.com/digger)  
Mobile: 07711 266931

**CARPET CLEANING**

HART CARPET CARE, Est. 1975. Professional  
carpet and upholstery care including: cleaning, stain  
protection & anti allergen treatments, and flood and  
water damage recovery. Contact Tim Marshall on T.  
01252 849920 M. 07803168693  
[tim@hartcarpetcare.co.uk](mailto:tim@hartcarpetcare.co.uk), [www.hartcarpetcare.co.uk](http://www.hartcarpetcare.co.uk)

**CATERING, CAKES, EVENT EQUIPMENT HIRE****CELEBRATIONS CAKES:**

Delicious bespoke cakes for any occasion. Birthdays,  
weddings, hen parties, christenings, anniversaries...  
Finest quality ingredients used with handmade  
decorations. Special dietary requirements can be  
catered for. [Anna@beresandberes.co.uk](mailto:Anna@beresandberes.co.uk)  
[www.beresandberes.co.uk](http://www.beresandberes.co.uk) 07872617165

JANE STOCKDALE For all catering requirements  
including dinners, lunches, buffets, cocktail parties,  
tea parties, Christening parties, After Service  
gatherings. Individual dishes, cooking for the freezer.  
Specializing in cakes & canapés.  
Please call 01252 723161 or 0777 5696918.  
email: [janestockdale01@hotmail.co.uk](mailto:janestockdale01@hotmail.co.uk)

**PARTY LINE**

Catering equipment hire. China glasses, linen, cake  
stands, tables, chairs, BBQ. See website for prices.  
01256 469255 07753 639845 [www.partyline.co](http://www.partyline.co)

**CHIMNEY SWEEPING**

BRUSHSTROKES Chimney Sweep. Wood burning  
stove service and repair specialist. Chimney  
problems solved. Pots, cowls and bird guards fitted.  
GMCS & HETAS reg. Keith Mitchell, Brush Strokes,  
The Hunny Tree, Seale Lane, Seale, GU10 1 LE.  
01252 783456 [www.masterchimneysweep.co.uk](http://www.masterchimneysweep.co.uk)

WILKINS CHIMNEY SWEEP - Established 1895.  
Traditional Brush & Vacuum Service, Nests  
Removed, Cages, Caps & Cowls fitted, Sweeping  
Certificates issued. Professional clean service, Fully  
Insured and Police Checked. T: 01256 830777  
W: [www.wilkinschimneysweep.co.uk/basingstoke](http://www.wilkinschimneysweep.co.uk/basingstoke)

**CLEANING**

CARAT CLEANING SERVICES Ltd. Reliable and  
Quality Service, High Standards. All domestic  
household chores. Ironing service, Carpet cleaning,  
etc. Fully insured. Call KAMILA on 07833445505 for  
a competitive price. Free quotes. (From £14 p.h.)

TIDY TIME SERVICES offers reliable domestic  
cleaning and housekeeping services.  
For quotes please phone Lucy on 07768639762.  
[www.tidytimeservices.com](http://www.tidytimeservices.com)



## **CLOCKS** MJW CLOCKS

Antique clock repairs, restoration & sales.  
Free local Collection/delivery.  
Contact Mike Webb. 01256 862492  
07734 817741 [www.mjwclocks.co.uk](http://www.mjwclocks.co.uk)

## **COMPUTER SERVICES, TV repair (see also TV)**

**PC DOCTOR** Do you have a sick computer?  
Computers repaired and upgraded, hardware and software installed, connection to email and the internet. Photograph to CD service.  
Contact Andy Pearce 01256 841204  
email: [pc.doctor@freeuk.com](mailto:pc.doctor@freeuk.com)

## **HOME COMPUTER SUPPORT & TUITION**

Friendly, Professional Support for PC & Apple.  
Health Checks & Virus removal.  
Maintenance & Upgrades. Broadband setup & Troubleshooting. Home Tuition for ALL abilities.  
Visit [www.myPChomehelp.co.uk](http://www.myPChomehelp.co.uk)  
Call Richard Siers on Bentley (01420) 22844

I.M.C.S. Onsite PC/Laptop service & support. Virus / Spyware removal. TV, Audio, Video repair & service.  
Digital switchover tuning . Contact Ian on 01256 701480.email - [imcs@hotmail.co.uk](mailto:imcs@hotmail.co.uk)

## **DENTISTS**

### **ENVISAGE DENTAL.**

Affordable dentistry, with clear results for the whole family. Gentle, reliable and highly qualified to care for all your dental needs. From routine to complex and nervous cases. Come and visit us in Basingstoke 01256 461888 and Alton 01420 84443  
*Love your dentist.*  
[www.envisage-dental.co.uk](http://www.envisage-dental.co.uk)

### **GUINEA COURT DENTAL SURGERY**

Exceptional dental care for all the family. We always put your needs first. Early morning, late evening and Saturday appointments available. We have specialists in Dental Implants, Orthodontics and Periodontics. Cosmetic dentistry, teeth whitening, fillers and Facial Aesthetics. Call 01256 840141 or visit [www.guineacourtdental.co.uk](http://www.guineacourtdental.co.uk)

**GWYNNE DENTAL.** Quality private dentistry delivered by 3 highly experienced dentists.  
A family run surgery where all patients have the principals' number for out of hours care.  
Contact: 01256 321945  
[jennifer@gwynnedental.co.uk](mailto:jennifer@gwynnedental.co.uk)  
[www.gwynnedental.co.uk](http://www.gwynnedental.co.uk)

**ODIHAM DENTAL** take great care, pride and time on the dental services we offer. We have an experienced team who will be happy to help with all your dental needs. We offer flexible appointment times including weekends and evening. We also treat baby teeth on children for free with parents on our care plan.  
[www.odihamdental.co.uk](http://www.odihamdental.co.uk) 01256 636472

## **DRIVING LESSONS**

### **SPRUCE SCHOOL OF MOTORING**

Established local reliable Driving Instructor,  
Lessons from Home, Work or College,  
Pass Plus & Motorway Lessons,  
Adrian Spruce, 01256 381306, 07976967059  
[www.spruceschoolofmotoring.com](http://www.spruceschoolofmotoring.com)

### **SILVERLINE SCHOOL OF MOTORING**

Local female driving instructor. Calm, patient and reliable. Flexible to fit around work and college commitments. Contact: [nicki.lewis@hotmail.co.uk](mailto:nicki.lewis@hotmail.co.uk)  
01420 561877 or 07717 853658

## **DOG TRAINING**

### **PAWPRINT DOG TRAINING.**

Does your dog run away when called or pull like a train or do you want to train your puppy or gundog? Then ring today 01420 587086, 07787416275

## **ELECTRICAL, APPLIANCES**

### **See also TV**

### **BRIAN BANE & SON**

Hoover & Hotpoint machines  
Service and repairs  
01252 844779

### **KEEN ELECTRICS Electrical Contractors.**

Professional, Domestic and commercial Electrical Contractors. Fully qualified and registered.  
Rochester House, 5 Aldershot Road,  
Fleet, Hants GU51 3NG.  
Tel 01252 614987. [www.keenelectrics.co.uk](http://www.keenelectrics.co.uk).

**ELECTRICIAN.** For all your home electrical needs including fault-finding, repairs, new lights & sockets, outdoor electrics. Prompt replies, free quotes.  
Steve Rae – 01256 703145 / 07852 655175  
[steve@lewisandrae.co.uk](mailto:steve@lewisandrae.co.uk) [www.lewisandrae.co.uk](http://www.lewisandrae.co.uk)  
See customer reviews at [Checkatrade.com](http://Checkatrade.com)

**FARM SHOP** NEWLYNS FARM SHOP, CAFÉ and COOKERY SCHOOL. Quality meat from our family farm. Traditional free-range chicken, pork, beef & lamb, eggs. Home-produced dry-cured bacon. Homemade pies, bread and cakes freshly baked on the premises. Lodge Farm, Hook Rd, North Warnborough, betwn N. Warnborough & Junc 5 M3. 01256 704128 [www.newlyns-farmshop.co.uk](http://www.newlyns-farmshop.co.uk)

### **FUNERAL DIRECTORS & MEMORIALS**

**ALEXANDER & DRY**

Funeral Directors and Memorial Consultants,  
1 Seal Road, Basingstoke, Hampshire RG21 7NQ,  
Telephone 01256 844663,  
Serving the Community for over 90 Years,

**SPENCER & PEYTON**

Independent, family-run Funeral Directors & Monumental Masons.

Pre-paid funeral plans.

London Rd, Hook, 01256 761717.

380 Worting Road, Basingstoke, 01256 323165

[www.spencerandpeyton.co.uk](http://www.spencerandpeyton.co.uk)

### **FURNITURE, JOINERY, DESIGN**

**See also under Tiles**

**CHIPANDELL JOINERY.** Established 35 years.

Traditional local craftsmen. Purpose-made joinery. Doors, windows, staircases. Kitchens & bedrooms. Handmade furniture. Specialist bespoke joinery using European hardwood. Herriard 01256 381 183 [www.chipandell.co.uk](http://www.chipandell.co.uk)

**HUGO EGLESTON FURNITURE,**

Furniture & woodwork designed & made to order.

Old Farm Yard, Lasham, GU 34 5RY, tel 01256

381368 [www.eglestonfurniture.co.uk](http://www.eglestonfurniture.co.uk)

**F B DESIGN, CABINET MAKERS**

Studies, Bookcases, Libraries and Home Offices.

Freestanding and Fitted Furniture.

Designed and made in Herriard Park

[www.fbdesign.co.uk](http://www.fbdesign.co.uk)

01256 381855

**STEPHEN BAILEY FINE FURNITURE.** Designer and maker of bespoke wooden furniture based in South Warnborough. Phone (01256) 862606 or visit [www.stephenbailey.co.uk](http://www.stephenbailey.co.uk)

### **FURNISHING FABRICS, BLINDS, CURTAINS, INTERIORS, SOFAS**

**ALTON BLINDS** Vertical, Venetian, roller and conservatory blinds. Patio awnings. Free measuring and fitting. Call David Hall (from South Warnborough) for a free quote. Phone 01256 862273 [www.altonblinds.co.uk](http://www.altonblinds.co.uk)

**COVER UP DESIGNS** offer a full range of interior design services. We produce hand-made soft furnishings in-house and offer a popular re-upholstery service. Our studio has a wide selection of beautiful up-to-the-minute fabrics, trimmings and wallpapers. The Barn, Hannington Farm, Hannington RG26 5TZ 01635 297981 [www.coverupdesigns.co.uk](http://www.coverupdesigns.co.uk) [info@coverupdesigns.co.uk](mailto:info@coverupdesigns.co.uk)

**HONEYSUCKLE INTERIORS LTD** Professionally hand-made soft furnishings including curtains, blinds, re-upholstery. All your interior design requirements. Huge library of fabric & wallpaper. Alterations and fitting service plus lots of friendly advice. Open Tues-Fri 10am to 4pm. Strictly by Appointment. 15 Meon Road, Oakley, Basingstoke RG23 7AL 01256 780831. [www.honeysuckleinteriors.co.uk](http://www.honeysuckleinteriors.co.uk)

**SOFAS & STUFF.** Sofas and beds, handmade in Britain, in any fabric in the World. Affordable and with a life-time guarantee. Visit our beautiful barn showroom, free parking and a fresh cup of coffee at The Walled Garden, Herriard Estate, RG25 2PL 01256 637240 [www.sofasandstuff.com](http://www.sofasandstuff.com)

### **FURNITURE RESTORATION**

**BEN NORRIS & CO Ltd** Restorers of Antique Furniture. We specialise in all aspects of furniture restoration including French Polishing. Member of BAFRA. Free estimates. Now in Basingstoke. 01256 333124 [www.bennorrisandcoltd.co.uk](http://www.bennorrisandcoltd.co.uk) [colin@bennorrisandco.co.uk](mailto:colin@bennorrisandco.co.uk)

**THE CABINET REPAIR SHOP**

Antique restoration, French polishing, cabinet making, marquetry and veneering. Woodlands Farm, Blacknest, Alton, Hants GU34 4QB 01420 23090 [csembling@outlook.com](mailto:csembling@outlook.com)

## **GARAGE SERVICES**

### **KINGS MOTOR SERVICES**

MOT Test centre. Servicing on all makes of cars.  
Tyres. Air con. Diagnostics. Parking sensors.  
South Warnborough 01256 862221  
www.kings-motors.co.uk  
enquiries@kings-motors.co.uk

## **GARDENS, LANDSCAPING, PONDS, FENCES** see also *Tree Work, Logs*

### **DAVE BALL GARDEN MAINTENANCE**

Logs & kindling wood. Fencing.  
01256 381631 07796417673

EXPERIENCED GARDENER specialising in year-round care and maintenance. Hedge and rose renovation. Design and plant planning. Herbaceous borders. Fencing. Contact Jane on 07788613206

### **G & S PONDSCAPES**

Specialising in the construction, cleaning and maintenance of ponds, waterfalls and rockeries. Installation and advice for pumps and filtration. All aspects of hard landscaping undertaken. Call Gary or Sarah for a free no obligation quote: 01420 475060 or 07866 424798

### **SAUNDERS LANDSCAPE SERVICES**

All general garden maintenance  
Patios, walls, fencing  
Hard and soft landscaping  
Tel/fax 01256 520163, mob 07831 318097

### **J SMITH & SON**

Regular and one-off visits.  
Lawns, Hedges, turfing, patios, driveways, fencing, pergolas, brickwork, garden clearance, gutters, and much more. Please phone for a free quotation  
01256 862860 or 07990 576440  
Victoria@jsmithandson.com  
www.jsmithandson.com

## **GARDEN MACHINERY SERVICE**

### **MALCOLM STONEMAN REPAIRS**

Garden Machinery. Sales, Service and Repair.  
North Warnborough. Open : Monday - Thursday  
8am - 12pm 1pm - 5pm Tel : 07850 655138

## **HART GARDEN MACHINERY**

We sell, service and repair all garden machinery, makes and models, and offer an excellent service with a quick turnaround. Feel free to ask us about our tool sharpening service.  
Hurst Farm RG27 8SL. 01252 844404

## **GARDEN URNS, STATUARY.**

JARDINIQUE Specialists in unusual pieces for gardens large and small. Large selection of interesting items, including birdbaths, seats, staddle stones, urns, sundials and much more for your garden or in the home. For opening times see our website or phone 01420 560055  
www.jardinique.co.uk Edward or Sarah Neish, Old Park Farm, Abbey Rd, Beech, Alton, GU34 4AP

## **HOLISTIC, BEAUTY, SKIN**

A TOUCH OF BEAUTY- Located within "The Pod" 5, Grebe Close, Alton, GU34 2LR. All Beauty & Holistic Treatments, Waxing, Pedicure, Reflexology, Cranial. Call Tracy today-07944 331682!

## **HEALTH, PHYSIO, PILATES**

PHYSIOTHERAPY Back and neck pain, headaches, sports injuries, ante/postnatal advice or posture improvement through physiotherapy, Clinical Pilates and DMS. Physiotherapy clinic in Upton Grey. Annabel Acheson-Gray, Grad Dip Phys Addenbrooke's, P-G Dip Manips, Cert Clinical Pilates and DMS. 07525140967 annabelsag@gmail.com

## **SQUARE ONE PHYSIOTHERAPY CLINIC. Herriard.**

Award-winning private practice offering physiotherapy, manual therapy, sports massage therapy, shockwave therapy and acupuncture, for ALL ages including children and adolescents. Affiliated with all private medical insurance companies. 01256 541515 www.square-one.uk.com info@square-one.uk.com

## **HELP**

PHONE JOAN gives you back your spare time by doing the jobs you don't like doing - searching for reliable trades people, organising odd-jobs and household projects, researching best buys and much more. We also provide reliable cleaners & ironers for regular or one-off spring cleans. Call Joan on 01252 612033 or visit our website at [www.phonejoan.co.uk](http://www.phonejoan.co.uk)

## **MARQUEES AND TENTS**

JOHN M CARTER LTD  
Established over 150 years  
Hirers of Traditional and Frame Marquees  
Makers of PVC and Canvas Covers  
Calor Gas Dealer and Delivery  
01256 324434  
[www.johnmcarterltd.co.uk](http://www.johnmcarterltd.co.uk)

## **MOBILITY EQUIPMENT /DAILY LIVING AIDS**

OUT & ABOUT - your local supplier of Stairlifts, Riser-Recliners, Powerchairs, Wheelchairs, Scooters, Bathing Equipment and Daily Living Aids. We also hire, service and repair your equipment. Visit our showroom at 25 Southview Rise, Alton or call 01420 549481. Free home assessments by arrangement. [www.outandabout-uk.com](http://www.outandabout-uk.com). We'll help you find all you need to live life to the full!

## **NURSERY SCHOOL, CHILDMINDING**

LITTLE CRICKETS NURSERY SCHOOL  
in the Sports Pavilion at Herriard Green. Rated 'Outstanding' by Ofsted 2017. The school is for children aged 2-5yrs and is run by a team of experienced staff. We welcome visitors so please call Nicky on 01256 384114, or visit our website [www.littlecricketsherriard.co.uk](http://www.littlecricketsherriard.co.uk).

Alison Fontaine OFSTED Outstanding Registered  
CHILDMINDER South Warnborough  
Tel:01256 862116 Mobile: 0771 227 0922  
Email: [AlisonFontaine303@gmail.com](mailto:AlisonFontaine303@gmail.com)

## **PEST CONTROL**

BROWNING PEST SERVICES LTD  
Mammals, insects and birds. One-off treatments and annual contracts. BPCA trained and insured  
Most treatments guaranteed including rodents, wasps, squirrels and moles. No Sun or bank holiday surcharges. 01256 686238, 01420 409741, m. 07717 132276. [www.mole-control-hampshire.co.uk](http://www.mole-control-hampshire.co.uk)

PCS – For all your pest control needs. Wasps, bees, hornets, mice, rats, moles, fleas, bed bugs, cockroaches and much more! Fast reliable professional service. Fully insured. Members of the BPCA Same day service, no call out charge. Call now on 01256 389124 or email [pcs1@live.co.uk](mailto:pcs1@live.co.uk)

## **COUNTY MOLECATCHER**

Traditional mole control - no gas or poison.  
Commercial and Domestic  
For more information please visit  
[www.countymolecatcher.co.uk](http://www.countymolecatcher.co.uk)  
Call: 07894 046263 or email:  
[judd@countymolecatcher.co.uk](mailto:judd@countymolecatcher.co.uk)

## **PIANOS**

BEN WHEELER PIANOS LTD  
Piano sales: new and used. Piano tuning & repair, piano removals, piano stools and accessories.  
[www.benwheelerpianos.co.uk](http://www.benwheelerpianos.co.uk) 01256 477198

## **PLUMBING**

S.R. HALL Ltd  
Gas-Safe registered Plumbing & Heating Engineers  
All aspects of plumbing works undertaken  
01256 765535, email: [srhalltd@btconnect.com](mailto:srhalltd@btconnect.com)

SAS PLUMBING AND HEATING LTD (Steve Sullivan) All aspects of plumbing and heating  
Specialising in design and installation of luxury bathrooms. Power showers. Water softeners  
Gas and oil heating systems. Boiler and cylinder changes 01256 478920 or e-mail  
[karenjsullivan7@gmail.com](mailto:karenjsullivan7@gmail.com)

STEVEN LAWRENCE Plumbing Services Ltd  
Installation, repair & maintenance of boilers, central heating, radiators, taps, showers, toilets. Burst pipes & leaks, blockages. Gas Safe registered (179698).  
Tel 01252 622349, mobile 07957 306 202  
email: [plumbing.services14@gmail.com](mailto:plumbing.services14@gmail.com)

**continued**

### **Plumbing continued**

DAVID F ROBERTS Plumbing and Heating Engineer  
Fully qualified, reliable and professional, with over 50 years' experience. Services include: New heating systems, hot water systems, upgrades, new bathrooms, welding, landlords certificates, leadwork. Gas safe registered (542535)  
Tel 01256 704411 and 07917 529065  
Email davidfroberts@outlook.com

### **PRINTERS**

#### **PRINT DIRECTIONS**

Complete design, print, web based services under one roof. Never Despair Studios, Unit 2, Alton Road South Warnborough, Hampshire, RG29 1RT  
Tel: 01256 863000 Fax: 01256 863001  
info@printdirections.co.uk www.printdirections.co.uk

### **PREMISES TO RENT**

HERRIARD ESTATE Offices, workshops and stores available; occasional cottages and paddocks.  
Herriard Estate Office: 01256 381275.  
www.herriardpark.com

### **REMOVALS, DELIVERY**

NC Man & Van Services LTD  
Supplying Stress Free Removals  
Office Moves  
Pick Up/Deliveries  
Call: Nick on 07999673646  
Email: ncmanvan@outlook.com

### **SECRETARIAL, SERVICED OFFICES, OFFICE SPACE**

OLD BANK HOUSE, ODIHAM  
For friendly and efficient Faxing  
Copying, Binding, Word processing  
Business address & serviced office accommodation  
contact Old Bank House, 59 High Street, Odiham.  
01256 704500, fax 01256 704717  
email: fridaystreet@oldbankhouse.co.uk

### **PRIME OFFICE SPACE**

Serviced, co-working and virtual office solutions.  
Call 020 3970 9731  
<https://primeofficespace.co.uk/basingstoke>

### **SECURITY ALARMS**

SECURITY SERVICES Your local SSAIB approved installer with over 20 years' experience in the alarm industry. All installations comply with current industry standards and can be either audible or monitored. Existing systems maintained based on site visit. We offer 24 hour cover & keyholding service. For info or free quote call Robert Jenkins 01252 844318 or 07721428782 [www.securityserviceshants.co.uk](http://www.securityserviceshants.co.uk)

### **TAILORING & GARMENT ALTERATIONS**

ELITE STITCH, Ladies and Gents garment alterations and tailoring service. Suits, Wedding outfits. Restyling and repairs. 1hr same day service. Curtains and soft furnishings. Leather and PVC repairs. 5 Star Express Gold service.  
[www.elitestitch.co.uk](http://www.elitestitch.co.uk)  
12 Upper Church Lane, Farnham, GU9 7WP  
elitestitch12@gmail.com 01252 444640

### **TILES PICCOLPASSO Handmade tiles & pottery**

Caroline Egleston, Old Farm Yard  
Lasham, nr Alton. 01256 381133  
[www.piccolpasso.com](http://www.piccolpasso.com)

### **TRANSPORT L.HUNT & SONS LTD**

General haulage, workshop, warehouse, groupage, low loaders, HIABS,  
Reynard House, Weston Road,  
Upton Grey, RG25 2RJ  
01256 862 702. Fax 01256 862190  
[www.huntsofbasingstoke.com](http://www.huntsofbasingstoke.com)

### **TREE WORK, LOGS**

#### **See also under Gardens**

ALAN DUCE for logs  
Phone 01256 862748 or 07508 056025

M&S TREES, Tree Care Specialists  
Catering for all aspects of tree care.  
01252 405669 [mikeandsteve@mandstrees.co.uk](mailto:mikeandsteve@mandstrees.co.uk)  
[www.mandstrees.co.uk](http://www.mandstrees.co.uk)

TREE SURGERY, TPO and Conservation Area applications, hedge cutting, stump removal. BBSH (Warwick Hawes) 01256 381259. Mob 07990 804692

## **TV & SOUND REPAIRS, AERIAL & SATELLITE**

HILLARY SERVICES Sound & Vision Repairs in your home to minimise delay & disruption. We service TVs, Hi-Fi systems, CCTV cameras & monitors, microwave ovens. We install Freesat HD, Also extra TV or phone points. Members of HCC Trading Standards 'Buy with Confidence' Scheme. Tel 01489 891 991 mob 07971 590 526

HORIZON SOUND & VISION Aerial installation for Freeview, Satellite Installation for Freesat, Sky, & European TV. Extra TV & Sky Points. Phone & Cat 5/6 Cabling. TV Wall Installation inc hidden cabling. Tuning & Smart TV set up inc cable tidying. WiFi Signal Improvement. CCTV Installations. Audio Systems inc Sonos. Trading Standards approved. 01256 841860 info@horizonsoundandvision.co.uk www.horizonsoundandvision.co.uk

## **TUTORS**

BASING TUTORS Local Tutors for Local People One-to-One Tuition. Friendly, personal approach, professional tutors. Full diagnostic assessment with no further obligation. Initial consultation free of charge. 01256 470948 email: admin@basingtutors.com www.basingtutors.com

FRENCH TUITION is available in your area from a French native speaker. From grammar to conversation, all levels are catered for with learning tailored to the individual's needs. Lessons can be organised for groups or individuals in your own home. Call Nadia 01256 930129 - 07775 500382

## **WATER SOFTENING**

AMS MAYFAIR. Fed up with scale in showers & kettles or the taste of your tap water? A family business based in Hook, we manufacture / supply affordable water softeners and water filters including the latest block salt versions. We also undertake water softener servicing and repairs, no call out charge. For more info call 01256 768171, mob 07836247694 or visit www.amswater.co.uk.

## **WEBSITES**

WEB DIRECTIONS Websites for all budgets from £55.00 Never Despair Studios, Unit 2, Alton Road, South Warnborough, Hampshire RG29 1RT Tel 01256 863050 info@webdirections.co.uk www.webdirections.co.uk.

*Please encourage reliable local tradesmen or service providers to advertise in the magazine. Can you recommend a tradesman or local service?*

*If so, please contact Susie Vereker at [uptongreymagazine@gmail.com](mailto:uptongreymagazine@gmail.com)*

## **Xtra, Xtra!**

### **UPTON GREY SHOP**

needs you! Use it or lose it.

Great variety of fresh goods, dry cleaning, Laundry and other services.

Current hours:

8am-5pm Mon –Sat

8am-1pm Sunday

**Post Office** closed permanently

## **Obituary - Margaret Helen Robertson Duke 1926-2020**

Helen & Brian Duke came to Upton Grey in 1961, buying the Village Farm House in an auction for what, at the time, was considered an overpriced sum! Helen made it a wonderful family home for a growing family of three to return to during school vacations and her husband's leave from the Medical Research Council in the Cameroons, West



Africa and later the WHO in Switzerland, where he worked as a research doctor in tropical diseases. Helen's dream, borne from many happy childhood memories spent at her uncle's farm in Sussex, was to live in a farmhouse. She embraced village life, helping with the church flowers, the PCC, the flower show and a great deal of entertaining - tennis teas, drinks and dinner parties. She would do similar in Africa & Switzerland at her other homes. Later life repeated itself with the arrival of grandchildren, Helen was always ready to open her house to them and her many visitors. After her divorce Helen took up a voluntary position with the Citizens Advice Bureau in Basingstoke, specialising in Industrial Tribunals, defending employees against large corporations. Most companies that came up against Helen met their nemesis and often made out-of-court offers once they heard who was representing the client. Meanwhile, through her interest in fishing, she made new friends and took up weekly trout fishing on the Loddon. Always ready to speak her mind and think freshly on different subjects with great humour, Helen was a wonderful character and a sharp contributor to village affairs. After much travelling during her earlier life, Helen was more than content to stay put and just enjoy country life. She took great solace and joy from her beloved home of nearly 60 years in Upton Grey. The love and respect shown by so many lining Church Street on her last trip from the Village Farm House to St Mary's reflected the kindness, welcome and camaraderie that she enjoyed in Upton Grey; that was so precious to her - a marvellous tribute to her from all. Thank you.

**Lucy and Anne Duke**

## **Upton Grey Fibre / Superfast Broadband**

Approaching 140 applications for fibre to be laid to their properties in Upton Grey have been submitted to Open Reach. Open Reach say that we should get a ballpark quote from them before the end of August.

*If anyone wants to add themselves to this application* then please email the following information to [estelle.clark@btinternet.com](mailto:estelle.clark@btinternet.com) – Postcode, Address, Landline telephone number, and B if they are a business. There is no guarantee that they can be added to our application but I will try.

*There are 4 phases* - by the end of August (hopefully) ensuring all residences have a ballpark quote from Open Reach. At this stage residents will be required to re-affirm their interest (based on this ballpark figure) and Open Reach will apply for the vouchers on our behalf. No contractual obligation at this stage.

*We then await our request for vouchers* which, if successful, will result in each property being given a net cost for installation. ‘Net cost’ is Open Reach’s final costing (subject to survey), based on residents’ responses, less value of vouchers. Currently I do not know how ‘subject to survey’ qualifies the final cost or how long it will take to get to this point.

*Each property must then decide whether to contract in* or not, and these responses will be progressed by a network of area representatives. This is the point where people have to **contract in** (or not) and pay 50% of their quoted net cost.

*Within about a year Open Reach will install all the fibre*, and residents will then have to pay the 50% balance.

### ***General Reminder of Key Points***

Installation of the fibre will probably increase the asset value of your house and/or probably make it easier to sell. A London School of Economics report claimed an average increase of 3% in value for houses with fibre laid and there are reports of house sales falling through because fibre had not been laid.

*Because of the current / limited voucher scheme* available, and the economies of scale of a community installation, it will probably be a lot less costly to install now than in the future.

With the current technologies, the disruption to your properties should be minimal. Having installed fibre you need do nothing more about your broadband service. As you now have fibre laid, your current broadband package may well deliver higher speeds – more in line with the advertised upload and download speeds that you contracted for. With the current copper wires laid to your house the farther you are from the



control box (by the phone box) the worse your service is. Fibre minimises this drawback.

You also have the option of contracting for a Superfast Broadband package with your broadband supplier (it does not have to be BT). In my case, I am with BT and it would cost me about £10 extra per month to upgrade from my current fast package to the superfast one.

**Any queries**, please contact Roger Clark,  
estelle.clark@btinternet.com or 01256 862 776.

### **Shoebox appeal 2020**

This autumn, St Mary's Upton Grey will be supporting the LinktoHope charity Family and Elderly Christmas shoebox appeal once again. We understand that due to Covid-19 many of you are still not going out and it may be difficult for you to get items to fill a shoebox. If you would like to contribute either by filling a shoebox, donating items to go into a shoebox or in any other way please let us know.

For those new to the village or who missed it last year, LinktoHope is a small UK-based Christian charity distributing c.45,000 shoeboxes a year to Romania, Moldova, Ukraine and Bulgaria where there are many desperately poor families and elderly people living lonely, isolated lives. When you have nothing, something simple can make all the difference.

While the shoeboxes do not need to be ready until the end of October, it's good to get ahead of the game and start collecting things now, especially empty shoeboxes. (We do have a number of shoeboxes available – just let us know if you would like one). LinktoHope's website suggests a strong adult size 8 shoebox filled with six essentials such as toothpaste/toothbrush, sweets/scarf and soap/flannel; then a further five items from their **Family** or **Elderly** list. The lists are there to give you ideas, but you don't need to feel limited by them - just fill your shoebox with a mix of practical and 'nice to have' items that will come in handy or bring a smile to a child or cheer a lonely elderly person. Just remember items should be new or unused. Their website [www.linktohope.co.uk/shoebox-appeal-2020](http://www.linktohope.co.uk/shoebox-appeal-2020) has more information.

Unlike other appeals, the shoeboxes aren't opened before shipment but **must** have a list of included items taped to the top of the box, once wrapped. LinktoHope doesn't put any literature with the boxes and promises not to discriminate who the boxes are given to. Our fundraising events last year have left us enough money to pay for the £3/box required for transportation/groundwork – you will therefore not have to include this with your shoebox.

Whilst delivering the shoeboxes LinktoHope also offer critical extra gifts of wood, food and medicine for those most in need.

Last year we received over 67 shoeboxes, which were blessed in the church before their onward journey. Please get involved and fill a shoebox. If it gets a bit expensive then involve family and friends and make one up together. Every shoebox makes a difference. It's a very simple and personal way you can make a difference to those who have very little.

**Debbie Bridle** [debbie@debbie-bridle.com](mailto:debbie@debbie-bridle.com)

**Viv Anscombe** [vivanscombe@gmail.com](mailto:vivanscombe@gmail.com)

**Sarah Gray** [sajgray59@yahoo.co.uk](mailto:sajgray59@yahoo.co.uk)

### **The Hoddington Arms looks forward to welcoming you!**

The Hoddington Arms is open and very much looks forward to welcoming you. To ensure everyone's safety the team have adjusted working practices in line with the government guidelines.

***Making a Reservation is Essential:*** To ensure that the team can look after everyone in a safe environment and maintain social distancing, it is essential that reservations are made in advance of your arrival. This will mean that the team stagger and control the volume of guests arriving at any one time. The Booking System is now live for Dining Reservations. If you would like to reserve a table for drinks, please email [bookings@hoddingtonarms.co.uk](mailto:bookings@hoddingtonarms.co.uk) 01256 862371, and please visit [www.hoddingtonarms.co.uk](http://www.hoddingtonarms.co.uk) to see details of the safety, social distancing and sanitizing procedures we have adopted.

### **HERRIARD AND WINSLADE NEWS**

[www.herriard-pc.gov.uk](http://www.herriard-pc.gov.uk)

<https://www.facebook.com/herriardexservicesclub>

**Herriard Village group on <http://www.Facebook.com>**

### **Greening Herriard**



There's no planet B. 'Greening Herriard', a new Climate Change Campaign, is initially working towards reducing carbon emissions. In the July and August Parish Magazines I gave a list of actions that we can all do in our own homes and at work. It just needs a bit of commitment towards CO2 reduction and being greener in our lives. We all need to come together to support action against climate change.

The whole list of challenges can be found in the Herriard Village website under Greening Herriard.

We are asking households of Herriard and Winslade to vote on their top two choices so that a list of eight most voted for challenges can be printed and sent out to everyone. Take a look at all the challenges and decide as a household which top two you would like our community to adopt.

There will be reminders and a voting poll set up on Herriard Village Facebook page between 11th-18th September, or you can email me your vote at the address below at any time. One vote per household.

Look out for a 'Greening Herriard' card with the eight challenges delivered to you. Take action on at least five of the eight challenges and place the card in your window to show you are taking part. The cards will be counted and we will find out how much CO2 we have saved.

Reducing our carbon footprint is an essential part in becoming a sustainable community. Please Support Greening Herriard!

***Date for the Diary:***

**Basingstoke Green Week 19th-27th September.** A (smaller than normal) programme of events in and around Basingstoke, based around greener living, will include our own Village Green Tools for a Natural Home, Kennel Cottage, Herriard RG25 2PD. Outdoor opening for refills, eco-friendly gifts and natural beauty products on Saturday 19th September 10.00am-2.00pm. The Greening Herriard Team will also be selling items to raise money for Greening Herriard, and the result of the vote will be displayed.

For more information, comments on climate change issues and to vote for your top two challenges, please email: [gill.hill@herriard-pc.gov.uk](mailto:gill.hill@herriard-pc.gov.uk)

**Obituary - Anthony George Falconer, Born August 1938, Died July 2020.**

Our picture shows the Herriard RBL Union Flag at half mast and the RBL Colour Party for his funeral procession. A bugler played the last post and the Legion's colours were dipped as the hearse left for the crematorium.

'Tony', eldest son of Bill and Monica and brother to Isla and Keith, spent his childhood at Laverstoke Park and Hackwood Estate where his father was game keeper.



His first job was with Lansing & Bagnells the fork lift manufacturer in Basingstoke. In 1956 he did National Service in Mechanical Transport, in Germany, where he met Alan Mills, known as 'Albert', a life-long friend who shares many stories. Albert sadly couldn't attend the funeral due to ill health.

Tony returned to Lansing & Bagnells and met Sue Matcham, the love of his life. Married on 16th December 1961 at St Mary's Church Lasham, they soon moved to Viables. Tony drove fork lifts at night, and worked by day driving tractors and the combine for harvest time at Viables Farm. Tony was a good welder and mechanic, and was in his element during the silage and haymaking season when the machines are at full pelt.

In 1974 the family moved to Titchners Farm in Hook. Richard, David and Janet went to Robert May's school. Richard liked it when his dad was baling the hay in the fields behind the school grounds, as he would jump over the school fence and go and give a hand, leaving Janet to catch the bus home by herself. David remembers coming back one day with Janet, and walking up the farm drive to see the cows were out and the demon bull was staring at Janet. He ran to shut the gate as the bull prepared to charge... Suddenly, from nowhere... dad ran out and scooped Janet out of the way! None of them had ever seen Tony move that quickly, and never would again!

Tony's second great love was his shooting, he was a good shot on the Port too! He loved a tippie on any occasion and a good 'knees-up!' He adored his family and especially his grandchildren – Jack, Ben, Catherine, Emma, Lucy and Harvey, and his great grandchildren - Arlo and Aliana. For him, nothing was greater than a Christmas with family and friends or a special occasion like a shoot lunch, especially the Boxing Day shoot gathering with all his family, and his favourite hymn 'Once in Royal David's City' playing with everyone singing along.

In 2010 Tony and Sue moved to No 1, Southrope Green, Herriard. Tony continued with the Herriard shoot, during their retirement years both were active members of the British Legion, and they finally went on holiday. They loved the Isle of Wight, spending time with sister Isla and her husband John. After his beloved wife Sue died in 2011, Tony embraced village life, care-taking for the British Legion Hall, keeping an interest in his garden and greenhouse, and keeping his hand in plucking pheasants and partridges in the shooting season. He was known 'to have made a Good Sandwich' by granddaughter Lucy.

**Jenny Falconer**

## **Herriard Gardening Club**

This year, I have grown more veg at home than ever, aiming to plant new crops when others are harvested for a succession of home grown produce. It is deeply satisfying to grow your own food, it tastes better, it's cheap and it hasn't been sitting on a supermarket shelf for days. I try really hard not to buy fruit and vegetables encased in plastic that gets sent to landfill, so I look for loose produce in the supermarket or buy from a plastic free wholesaler. Berries bought in supermarkets always come in plastic tubs that are thrown away, so it's really wonderful to be able to pick your own fruit in season, without the plastic, especially when it's free!

In season between August and October, by September blackberries are at their best. If picking in hedgerows or woods, avoid picking by busy roads, and pick higher up the bush away from passing dogs. Discard any that are mouldy. Try not to stack too many berries on top of each other or they'll bruise and squash. It is best to wash blackberries just before using, by dipping them in a colander into a bowl of cold water, then allow the berries to drain and dry. These late summer berries are packed with important nutrients. Blackberries are easily frozen, on a tray in a single layer. Or you can puree them first and freeze the juice. Blackberries can be used in savoury dishes, such as in a sweet sharp sauce with venison, duck or other game birds. So choose a nice day this month and pick some of these juicy, ripe berries near footpaths and walking routes in our beautiful Hampshire countryside.

### ***Blackberry and raspberry ripple ice cream***

Makes 1.2 litres. No need for an ice cream maker. Take it out of the freezer well before eating to soften a little. Perfect with a crumble or on its own with an almond tuille.

#### **Ingredients**

|                   |                              |
|-------------------|------------------------------|
| 150g raspberries  | 2 egg yolks                  |
| 150g blackberries | 500ml full fat crème fraiche |
| 200g caster sugar | 284ml double cream           |
|                   | 1 vanilla pod split          |

#### **Method**

1. Place the raspberries and blackberries in a small pan with 2 tbsp water and 40g of sugar. Heat gently, crushing the berries slightly with the back of a spoon, until the sugar has dissolved. Cool then chill.

2. Place a 1.5L plastic container into the freezer.
3. Place a bowl over a pan of simmering water and whisk the egg yolks and remaining caster sugar together for about 5 mins until thick and pale. Remove from the heat and whisk in the crème fraiche.
4. Scarpe the seeds out of the vanilla pod, add to the double cream and whisk until it just holds its shape.
5. Fold the cream into the crème fraiche mixture and pour into the chilled container.
6. Pour over the berry mix and use a spoon to create ripples through the cream.
7. Freeze for at least 6 hours.
8. Transfer to the fridge 20 mins before serving.      Enjoy!

**Gill Hill**

## **OTHER NEWS AND EVENTS**

### **National Garden Scheme Gardens - Hampshire**



Open to anyone, you do not have to be a member of the NGS to be able to visit a garden of your choice. I say this because I had an enquiry from someone this week asking if it was possible to get tickets, although they did not belong to the NGS.

At this stage we just have the one garden committed to open in September - an old favourite:-

**The Thatched Cottage, Church Road, Upper Farringdon, Alton GU34 3EG** A one and a half acre garden hidden behind a C16 thatched cottage. Borders burst with cottage garden plants and a pond provides the soothing sound of water. A pergola of roses, clematis and honey suckle leads to the chickens and ducks, under a walnut tree. If you missed this one in August, you now have a second chance.

Other garden owners may decide to open for one last time in September, so **please keep checking the website. [ngs.org.uk](http://ngs.org.uk).**

**Pat Beagley**

## **How will new planning system proposals impact our parishes?**

*[I am writing this in my personal capacity as a long-term resident of the area concerned about the anticipated relaxation of planning rules and the increasing number of major developments now being worked on.]*

Today, we all have a real voice in any planning application at pretty much whatever scale. But with a new “zoning system” underlying new planning legislation it is likely that, unless we organise to monitor and influence the development of local plans at the earliest possible stage, our ability as communities to comment on and modify proposals – and even that of our own local Councillors to do so – will be pretty much gone for ever.

The number of development schemes already being worked up for countryside south of the M3 is growing. Many of these, up until now, would be unlikely ever to have progressed; much of the present activity appears to be in anticipation of changes to the planning system itself. I feel it is no exaggeration to suggest that, right now, the whole of the area south of the M3 is seen as a real development prospect. If you have not recently travelled down the A339 to Alton, and then a little further towards Bordon, I recommend you do so, to see just how quickly the countryside is being swallowed up.



### ***The big question is: what part will public consultation play in future planning?***

It is good to learn recently of a really consultative approach being taken by landowners and the residents of at least one local village, to work together to maintain the rural character and traditional features of the village whilst realising for owners some of the potential development value of their land. This is a sadly rare example of parties with naturally opposing interests trying to work together to get an agreed solution with benefits to all.

Commercial developers, by contrast, are generally not part of the communities in which they seek to develop - however much they may pretend to be - and often have no compelling reason to seek anything

other than profit maximisation. Schemes like the Upper Swallick Garden Village tick various ‘must have’ boxes on planning authorities’ check lists but without appearing to try to engage in genuine community consultations. Under the proposed revisions to the planning system it appears that this ‘Garden Village’ development, should it be lodged formally as a planning application, would almost certainly get approval – that’s how serious the situation is.

***Planning is supposed to be about developing communities – that’s why it is a local-authority controlled activity at present.***

When we compare the Swallick Garden Village proposals against Moto’s M3 Junction 6 Service Area proposals, we are comparing proposed development of things people genuinely want and need - houses - against speculative profit-maximising proposals that seemingly bring little or no real benefits to the wider community. But although the two sets of proposals both involve elements of public consultation, in both cases this appears to be largely window dressing or designed to flush out key objections in advance. It is to be hoped that future planning system changes will ensure that public consultations are meaningful and that all schemes deliver real benefits to the areas that they impact. It’s not just a residents’ issue. Walkers, runners, cyclists and riders all have a real interest in preserving the landscape and character of our rural environment.

I am aware that, in relation to that particular Moto proposal, many people struggle to see any benefit to our community which might outweigh the damage it would cause. Yet Moto continue to press forward with the proposal (first lodged in 2017) despite determined efforts by our small community in Tunworth and Winslade to stop it. And in doing so they have revealed many of the weaknesses in our legislation and the capabilities of the institutions and agencies set up to protect our landscape, heritage and environment. All we can do is to stay vigilant and look carefully at what is planned, talk to our local Councillors and our MPs, and get organised as the STaNHd group (Stand Up for the North Hampshire Downs) have done. Right now it’s our countryside and our environment, and it is our Councillors – whom we democratically elect – and our Local Authority who have most of the say in what gets built and where. We are likely soon to see a lot of that democratic power disappear. Please get involved, join groups that are established and any others that emerge if you want to retain the beautiful environment in which we are privileged to live.

**David Shearer**



### **Upton Grey Playground Equipment Survey**

Upton Grey Parish Council has a grant to spend on Outdoor Gym Equipment and a Multi-Use Ball Wall which will be installed in the grass areas of the Playground. To help us with choosing the equipment please complete this survey. When completed please send your survey to:

Parish Councillor Alison Barker - Champion House, Cleves Lane,  
Upton Grey RG25 2RG

Alternatively, you can fill in the survey online, which includes links to examples of the equipment being considered:

<https://www.surveymonkey.co.uk/r/P8M6B8Y>

#### **First, please indicate the Outdoor Gym Equipment you would use:**

|                                       | Yes | No | Not sure |
|---------------------------------------|-----|----|----------|
| Health Walker / Air Walker            |     |    |          |
| Plyometric Boxes                      |     |    |          |
| Cross Country / Slalom Skier          |     |    |          |
| Arm and Pedal Cycle                   |     |    |          |
| Combi Pull Down Chest Press Exerciser |     |    |          |
| Seated Leg Press                      |     |    |          |
| Power                                 |     |    |          |
| Waist Twister                         |     |    |          |
| Sit Up Bench                          |     |    |          |
| Dip Bars                              |     |    |          |
| Push Up Bar                           |     |    |          |
| Leg Raise Rack                        |     |    |          |

**Second**, a Multi-Use Ball Wall would enable various sports to be played on the recreation ground – in the area where the goal mouth is. **Please circle all the ball sports you or your family would be interested in** playing at the recreation ground:

Football

Cricket

Hockey

Other ball sports, please tell us .....

Finally, please let us know any comments you would like to make:

.....

.....

.....

.....

.....

.....

.....

or you can email Councillor Barker at  
alison12345@btinternet.com

Thank you!

**Upton Grey Parish Council**

## SMALL ADS

### **Open as usual – Pick your own Fruit, Hartley Wintney**

West Green Fruits, Hartley Wintney RG27 8LP, opens from mid-June to September for a wide selection of PYO & ready-picked summer fruits, vegetables, honey, jams and free-range eggs. Christmas trees from end November. Call 01252 845772 or visit [www.westgreenfruits.com](http://www.westgreenfruits.com) for further information. During open hours you can call 07954 730143 to place orders etc.

## HALLS FOR HIRE

(subject to the government guidance and local constraints)

**Upton Grey Village Hall** for hire from £8.50 per hour. Functions, meetings, parties, private and commercial. Full kitchen facilities, central heating and sound system, chairs, tables, crockery and cutlery available. Contact Elaine Lewington on 01256 862894.

**The Royal British Legion Hall**, Herriard, available for hire: wedding receptions, functions, parties, meetings, and events. Fully licensed bar, full kitchen facilities, garden, tables and chairs, sound system, disabled access, central heating, pool table and darts. The new keyholder is Betty Ball on 01256 381487. Email [betball39@gmail.com](mailto:betball39@gmail.com), [herriardrbllhall@gmail.com](mailto:herriardrbllhall@gmail.com).

## ADVANCE DATES FOR YOUR DIARY

Please note all events are still subject to cancellation following Government advice and restrictions on events and public meetings due to the outbreak of Coronavirus. Please check with the organisers if attending a specific event.

|               |  |        |
|---------------|--|--------|
| 19th-27th Sep | Basingstoke Green Week                     |        |
| 14th Oct Wed  | Herriard Harvest Supper RBLH               | 7.00pm |
| 20th-21st Nov | UG Drama Group Production, UG Village Hall | 7.30pm |
| 13th Mar 2021 | Upton Grey Safari Supper                   |        |

## UPDATED TEMPORARY HOURS UPTON GREY VILLAGE SHOP

8.00am–5.00pm Mon–Sat

8.00am–1.00pm Sun

(responding to village consultation, the Post Office is now closed permanently)

*Disclaimer: Please note that the views expressed in this magazine are the contributors' personal opinions and do not necessarily represent the views of the editors.*

**Deadline: The copy deadline is 15th September for the October issue.**

**Please email your news and contributions to [uptongreymagazine@gmail.com](mailto:uptongreymagazine@gmail.com).**

**October's editor is Tess Chevallier. Your editor this month was David Shearer.**

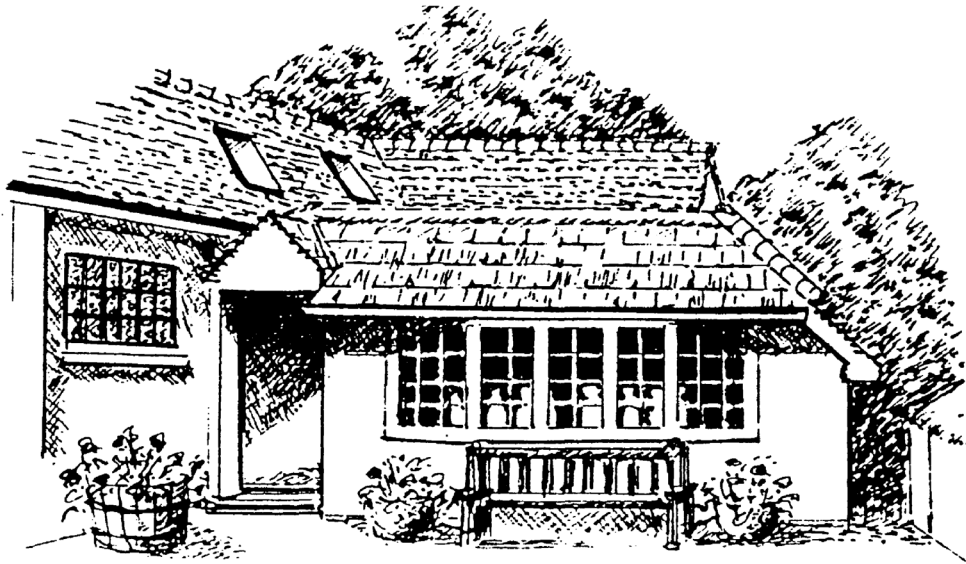
# UPTON GREY VILLAGE SHOP

Tel: 01256 862326 (Shop)

[shopuptongrey@btconnect.com](mailto:shopuptongrey@btconnect.com)

*"Serving the Community"*

*"Supported by all who care for Village Life"*



## **THE VILLAGE SHOP**

### **OPENING TIMES**

Monday - Friday: 7am - 7pm

Saturday: 7am - 6pm

Sunday: 8am - 1pm

### **RANGE OF GOODS**

Special range of Cheeses  
Fresh Bread & Vegetables daily  
Fresh Meat & Fish to order  
Range of Wine & Spirits  
Home Cooked Food  
and Delicatessen  
Dry Cleaning & Shoe Repairs  
Newspapers  
Home Delivery Service

The Post Office has  
permanently closed

Temporary Shop Opening  
Hours during lockdown

8am – 5pm Mon to Sat

8 am – 1pm Sun